



CRISTO REY
DALLAS COLLEGE PREP

PRESIDENT

POSITION PROFILE

*Organization: **Cristo Rey Dallas College Prep***

*Location: **Dallas, TX***



MANEVA

ORGANIZATION OVERVIEW

Cristo Rey Dallas is a private Catholic high school whose mission is to prepare students of all faiths from low- to moderate-income families to realize their full potential through a rigorous academic curriculum, engaging college readiness program, and innovative Corporate Work Study Program.

Founded in 2015, Cristo Rey Dallas is part of the nationally recognized Cristo Rey Network, a network of 40 schools across the United States dedicated to preparing students of limited economic means for college completion and career success. Through a unique integration of classroom learning and professional experience, Cristo Rey students graduate equipped with the academic foundation and workplace skills needed to thrive.

Cristo Rey Dallas serves approximately 485 students, the majority of whom are first-generation college-bound. The school has built strong momentum in recent years, with rising enrollment demand and a waiting list of prospective students, and a strong reputation across the Cristo Rey Network for delivering transformational outcomes.

For more information about Cristo Rey Dallas, please visit: cristoreydallas.org.



PREMIER CATHOLIC EDUCATION

Cristo Rey Dallas is grounded in the traditions of Catholic education, emphasizing faith formation, academic excellence, and a deep commitment to service. The school fosters a values-driven environment where students are encouraged to grow intellectually, spiritually, and personally.

As part of the Cristo Rey Network, Cristo Rey Dallas is committed to forming the whole person - preparing students to think critically, act with integrity, and contribute meaningfully to their communities. This holistic approach to education, rooted in faith and reinforced through the school's rigorous academics and Corporate Work Study Program, is central to the student experience and the school's mission.

CRISTO REY DALLAS AT WORK

A defining feature of Cristo Rey Dallas is its Corporate Work Study Program (CWSP), which integrates professional work experience directly into the academic model. Students participate in a job-sharing model in which teams of students each work one day per week in corporate and nonprofit settings across the Dallas region, gaining real-world experience while contributing to the cost of their education.

Through partnerships with more than 140 organizations, the CWSP provides students with exposure to a wide range of industries, including finance, healthcare, law, engineering, and technology. The program not only strengthens students' professional readiness, but also creates a powerful connection between the school and the broader business community, positioning Cristo Rey Dallas as a unique and valuable partner across the region.



PRESIDENT

Cristo Rey Dallas seeks a dynamic, mission-driven, and strategic leader to serve as its next President.

The President will serve as the executive leader of Cristo Rey Dallas, responsible for advancing the school's mission, ensuring financial sustainability, and strengthening its visibility and impact across the Dallas community.

Reporting to the Board of Directors, the President serves as the chief executive of Cristo Rey Dallas and oversees the Principal, who leads the academic program. While the roles are distinct, the President and Principal operate as a closely aligned leadership team, working in partnership to ensure the school's success. The President leads external affairs, fundraising, finance, and strategic growth, ensuring the long-term strength and sustainability of the institution.

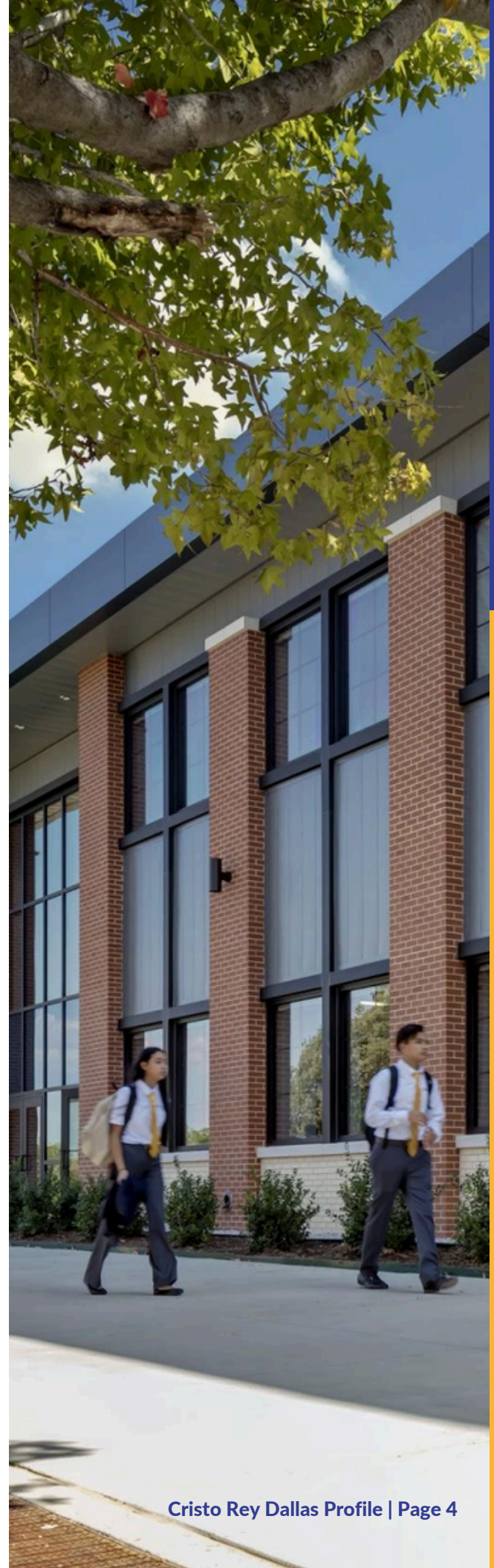
The President will serve as the primary ambassador for Cristo Rey Dallas, building relationships with donors, corporate partners, civic leaders, and families. Success in this role will require the ability to quickly establish credibility within Dallas' relationship-driven civic and business community, navigating a highly competitive philanthropic landscape with authenticity and strategic intent. This leader will be instrumental in expanding philanthropic support and positioning the school for future growth, including a potential capital campaign and endowment development. The President will also directly advance the Corporate Work Study Program, expanding employer partnerships, strengthening retention, and identifying innovative approaches to growth and long-term sustainability.

This is a highly visible leadership role requiring a balance of strategic vision and hands-on execution. The ideal candidate will bring strong business acumen, experience generating revenue and the capacity to be an effective fundraiser, and the ability to lead within a collaborative, mission-driven environment. This leader will step into a critical moment requiring a focus on financial sustainability, including strengthening cash flow, building reserves, and laying the groundwork for a future capital campaign and endowment.



KEY RESPONSIBILITIES

- Serve as the chief leader of Cristo Rey Dallas, advancing the mission and strategic vision of the school
- Lead and significantly grow fundraising efforts across individual, corporate, and foundation giving, including major gifts and campaign planning
- Serve as the primary external ambassador, building relationships with donors, corporate partners, civic leaders, and the broader Dallas community
- Partner closely with the Principal to ensure strong alignment between academic leadership and organizational strategy
- Strengthen and expand the Corporate Work Study Program by deepening employer partnerships and increasing program sustainability
- Develop and implement a long-term strategic plan to guide the organization's growth and financial sustainability
- Lead, mentor, and build a high-performing leadership team across advancement, corporate work study, finance, and operations
- Engage and activate the Board of Directors, supporting trustees in fundraising, governance, and strategic leadership
- Enhance brand visibility and awareness, positioning Cristo Rey Dallas as a leading educational institution in the region
- Ensure strong financial stewardship, including oversight of budgeting, revenue generation, and long-term financial planning



LEADERSHIP COMPETENCIES & PERSONAL CHARACTERISTICS

Mission-Driven Leader

The President will demonstrate a deep commitment to the mission of Cristo Rey Dallas and the values of Catholic education, embracing and upholding the school's faith-based identity while fostering an inclusive and supportive environment for students, families, faculty, and staff. This leader will build trust, transparency, and alignment across the organization, breaking down silos between academic, advancement, and operational teams and ensuring a cohesive, mission-driven culture.

External Ambassador & Fundraiser

This leader will bring a proven track record of fundraising success and relationship building. They will be comfortable engaging a wide range of stakeholders and inspiring philanthropic investment in the school's mission. The President will also serve as the primary spokesperson for Cristo Rey Dallas, bringing the presence, gravitas, and communication skills required to represent the school effectively before large and diverse audiences. With a strategic and hands-on approach to advancement, the President will cultivate and steward major donors, expand corporate partnerships, particularly in support of the Corporate Work Study Program, and effectively articulate a compelling vision that resonates across Dallas' civic and philanthropic communities.

Business-Minded Executive

The ideal candidate will bring strong financial and operational acumen, with the ability to manage a complex organization and guide it toward long-term sustainability and growth. The President will lead with an enterprise mindset, balancing multiple stakeholders, revenue streams, and strategic priorities while making disciplined, high-impact decisions about where to focus time and resources.

Collaborative and Community-Oriented Leader

The President will build strong, trusting relationships across faculty, staff, students, leadership, and the broader community. This individual will foster alignment internally while serving as a connector across Dallas' diverse civic, corporate, and philanthropic networks. A high degree of cultural competence will be essential, demonstrating the ability to engage authentically with students, families, and stakeholders from a wide range of backgrounds, and to lead with inclusivity, respect, and awareness of the communities Cristo Rey Dallas serves.

LOCATION, COMPENSATION & BENEFITS

This role is based in Dallas, Texas, and requires a highly visible, on-campus presence, along with regular engagement in the broader community.

Salary for this position is expected to range from \$175,000 to \$215,000, commensurate with experience and qualifications, and includes a competitive benefits package.

HOW TO EXPRESS INTEREST

To express your interest in this opportunity, please submit your resume and cover letter [via the Maneva website](#).

All inquiries and discussions will be handled with the utmost confidentiality. This position is available immediately, and applications will be reviewed on a rolling basis until the role is filled.

We look forward to connecting with you!



ABOUT MANEVA GROUP

Maneva Group is a leading woman and minority owned executive search firm dedicated to connecting exceptional talent with organizations committed to making a meaningful impact. Through a consultative and client-focused approach, Maneva Group partners with mission-driven organizations to build transformative leadership teams.

Our name, Maneva, comes from the combination of two Sanskrit words: “**Mānav**” meaning mankind & “**Sevā**” meaning service. We are driven by the ideal of our name - service to humanity.